

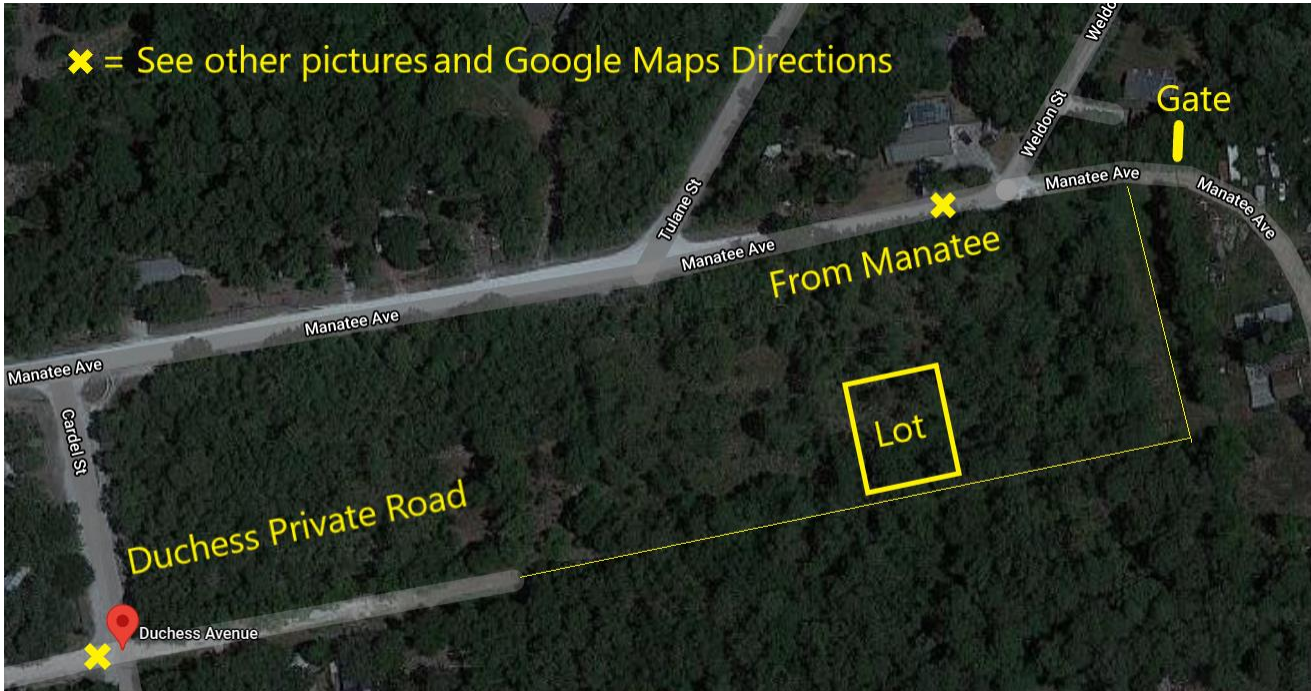
How to Locate the Duchess Ave Lot

[Watch this video](#) to see the location of the lot and the paths to the lot.

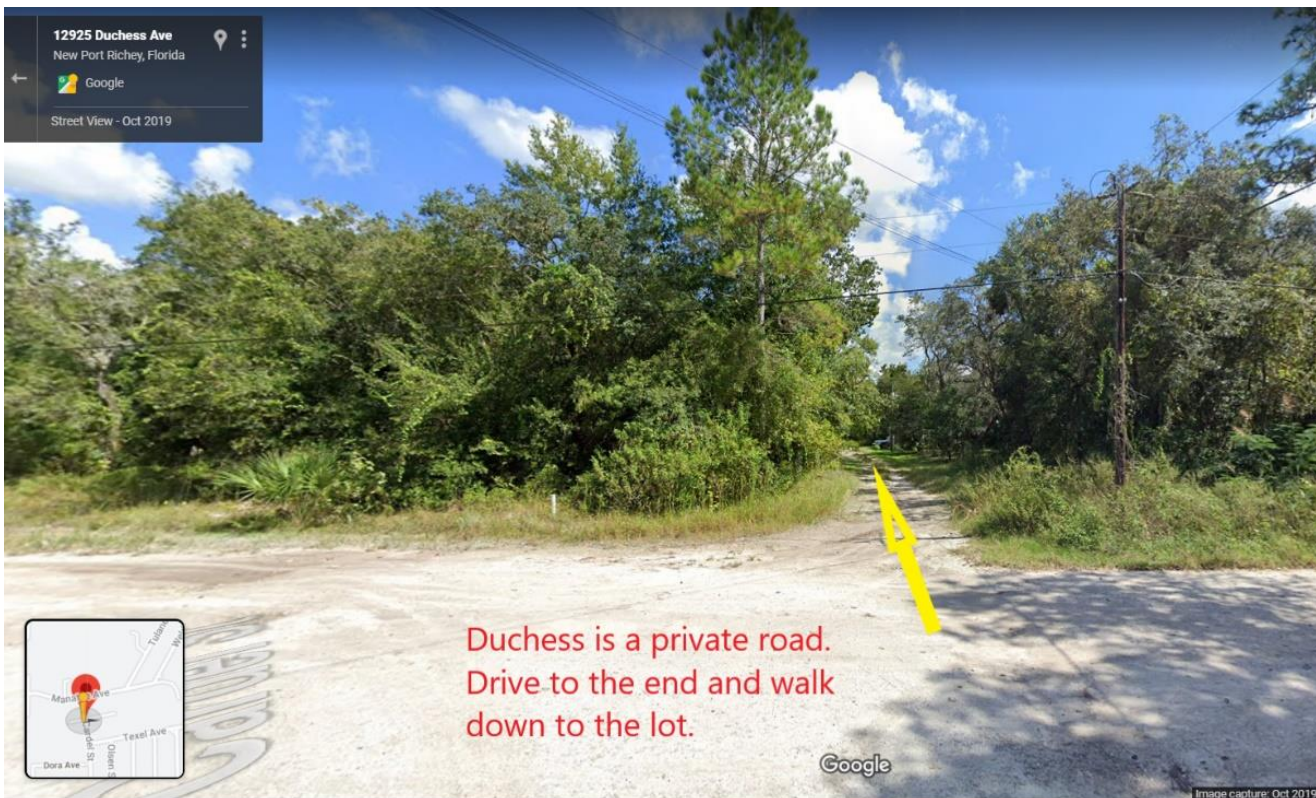
Follow either of these links to the neighborhood. They will take you to the yellow X spots in this picture.

[From Manatee Ave](#)

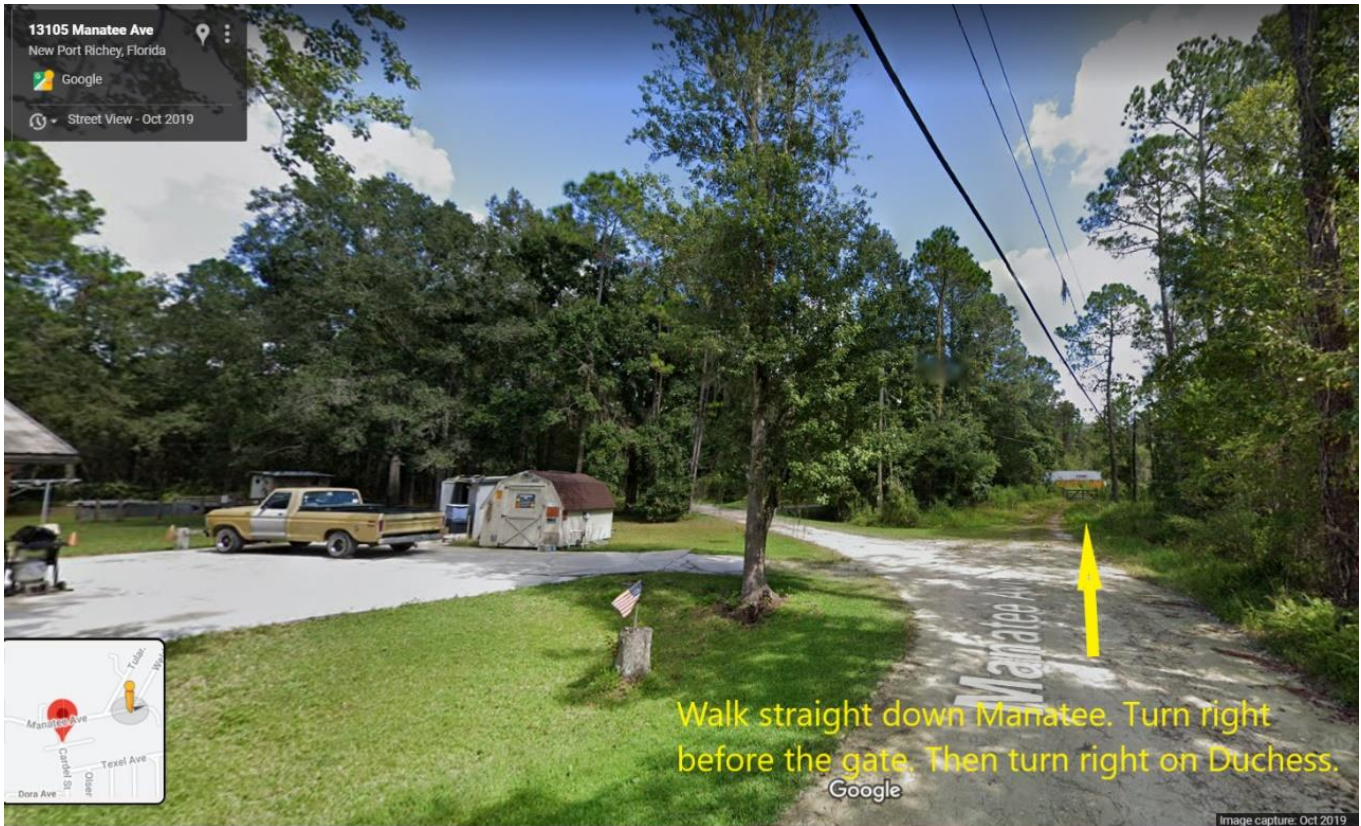
[From Cardel and Duchess](#)



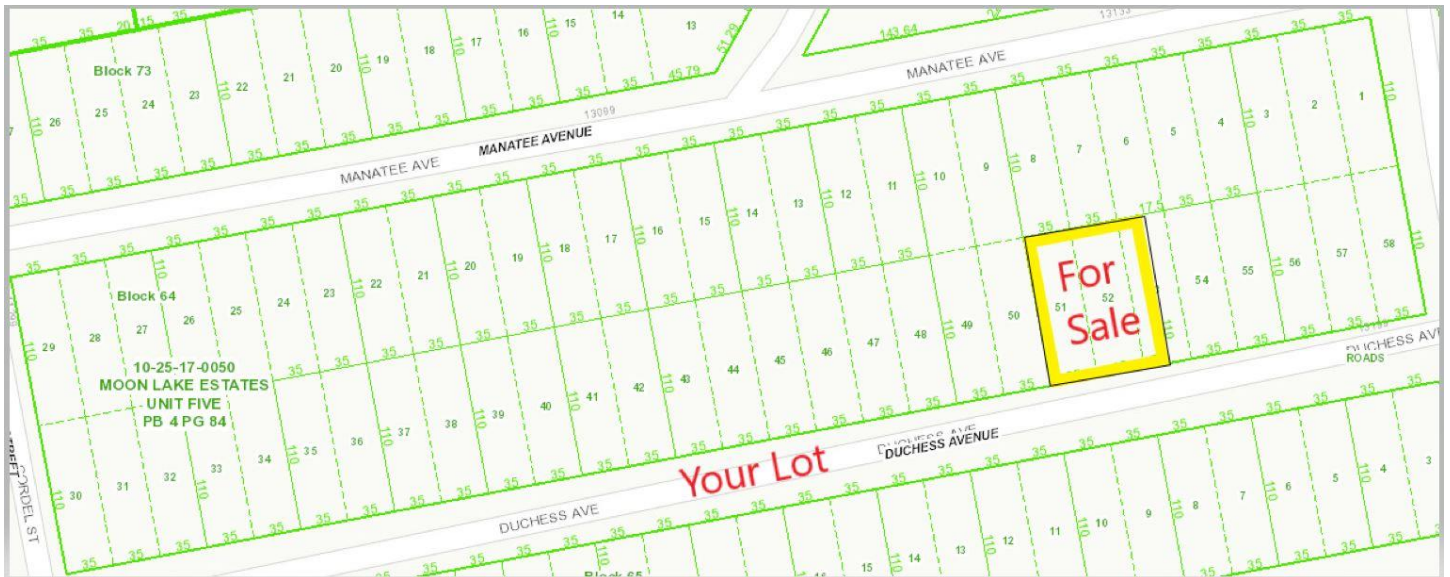
The lot is on Duchess Avenue, which is a private road. There is a house part way down the right of way and the road is open to there. From there, it is more of a trail going to the lot.



From Manatee Ave you can proceed straight ahead instead of turning on Weldon St. Go to just before the gate and turn right on the trail. In about 230 feet, turn right on the Duchess Ave trail.



Here are all the lot lines



Use your phone to locate all the corners of the lot by following these links:

[Southwest Corner](#)

[Northwest Corner](#)

[Northeast Corner](#)

[Southeast Corner](#)